



Products Catalogue



AGRILAND CENTER DRIVE



Motor Shaft
29mm diameter

Pinion Gear
has excellent coordination
with the motor shaft

**Extra large
intermediate bearing**
provides much longer life

25° Pressure Angle
has 40 more load capacity
than our competitors

**Integrated Crop Guard
Over the U joint**
offers better seal protection
during packaging, transportation
and service in the field

Output Seal

Stator

very resistant to corrosion, can
be replaced independent of the
rotor, assembled with galvaniz-
ed bolts for easy maintenance

High Dust Proof Bearings
Provide longer life

Double Stage "D" Ring
makes the center drive more
reliable and efficient by using
fewer gears, bearings and shafts

**Finned Aluminum
Housing**

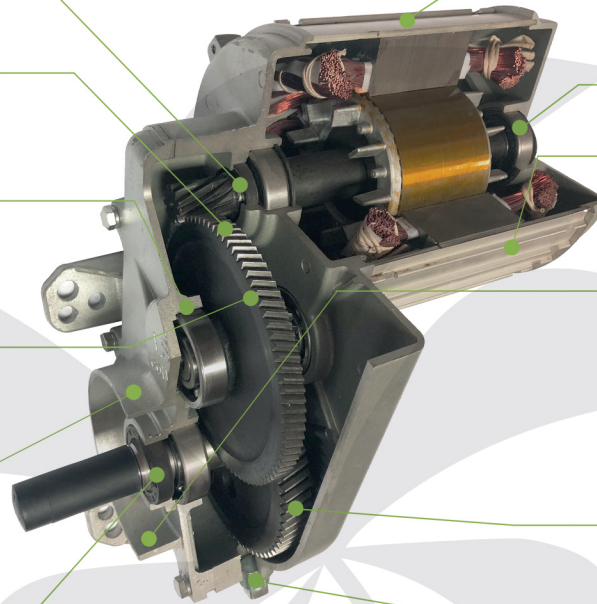
the JWL aluminum housing and
fins dissipate heat more effec-
tively at 20°F cooler than motors
with steel housing, without
reducing smooth and efficient
operation

**Case Hardened Steel
Gears**

More teeth meshed and
smooth power transmission

Drain Plug

Easily accessible and extra large



Center Drive Performance

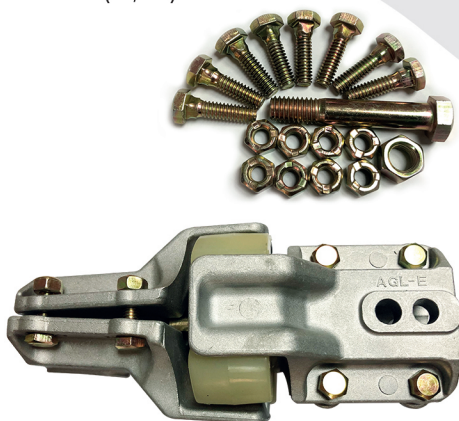
Description	Power	Drive speed (rpm)		Drive ratio	Output speed (rpm)		Output torque		Weight kg/lbs
		460V	380V		460V	380V	460V	380V	
LFNG75 - 34	0.75	1720	1420	50:1	34	28	157.3 Nm	157.8 Nm	25.0 / 55
LFNG75 - 43	0.75	1720	1420	40:1	43	35	124.4 Nm	126.2 Nm	25.0 / 55
LFNG10 - 34	1.00	1720	1420	50:1	34	28	200.0 Nm	200.0 Nm	26.0 / 57
LFNG10 - 43	1.00	1720	1420	40:1	43	35	158.0 Nm	158.0 Nm	26.0 / 57
LFNG15 - 34	1.50	1720	1420	50:1	34	28	314.5 Nm	315.5 Nm	27.7 / 61
LFNG15 - 43	1.50	1720	1420	40:1	43	35	248.7 Nm	252.4 Nm	27.7 / 61
LFNG15 - 57	1.50	1720	1420	30:1	57	47	187.6 Nm	188.0 Nm	25.0 / 55
LFNG15 - 68	1.50	3440	2840	50:1	68	57	157.3 Nm	155.0 Nm	26.8 / 59
LFNG15 - 86	1.50	3440	2840	40:1	86	71	124.4 Nm	124.4 Nm	26.8 / 59

COUPLING

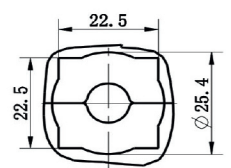
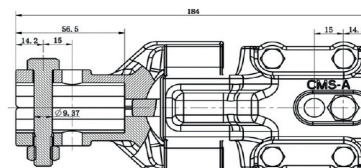
AGL-E (A, D)

Coupling Cover

Technical Parameters



Description	Diameter in sq.	Diameter out sq.
AGL-E (A)	7/ 8	7/ 8
AGL-E (D)	7/ 8	3/ 4



AGRILAND WHEEL DRIVE



Large capacity rubber diaphragm

expands with heat and pressure to minimize water condensation

Input and output bearings

hardened to provide the highest quality and load rating available in the industry

Worm gear

high-strength ductile with cast iron bull gear. iron provides significantly longer wear life than steel when combined

Tooth Design

industry exclusive 25° tooth angle provides 40% longer life and better reliability in tough conditions compared to normal 14.5° tooth designs.

Largest bull gear neck and keyway

for extra strength in critical load-bearing area

Longest output shaft (steel)

Agriland Egypt Provides extra clearance between gearbox and wheel flange to reduce mud buildup, which reduces seal damage and extends gearbox life.



Expansion chamber

cap made of corrosion-resistant cast aluminum; rubber diaphragm allows oil to expand and contract during operation. Vented cap prevents pressure buildup and prevents seal from leaking

Threaded endcap

allows accurate bearing preload to increase bearing life

Gear ratio

full recessed tooth design keeps oil between engaged gears

Iron Cast

high-strength cast iron provides highest load capacity in the industry and longest life. Optional bronze gear is available for extreme conditions

Multi-viscosity gearbox oil

exceeds 85w140 GL5 oil for long gear wear under extreme load conditions

Wheel Drive Performance

Description	Drive ratio	Output shaft Diameter	Weight	Oil
AGL-E-L3	52:1	57.15mm	55 Kg	3.5 L
AGL-E-S2	50:1	57.15mm	53 Kg	3.5 L
AGL-E-L2	52:1	57.15mm	59 Kg	3.5 L
LSNG-V-L1	52:1	57.15mm	57 Kg	3.5 L
LSNG-M-S1	50:1	57.15mm	50 Kg	3.5 L
LSNG-NYT	50:1	57.15mm	57 Kg	3.5 L



Gear Box Spare Parts

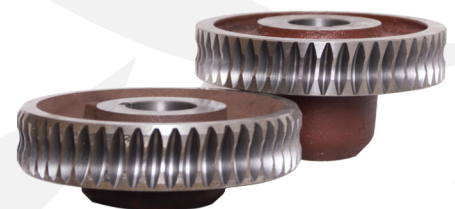
Worm Shafts



Shafts



Worm Gear



Bolts



Bearings



Seals



Main Control Panel



Features:

- Galvanised Steel
- Painted Box
- Heavy Duty
- Volt Meter
- Directional Switch
- Hour Meter
- Weather-tight Enclosure
- Main Power Disconnect
- Bolt in Mounting Brackets

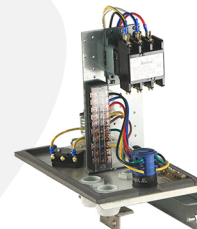
Timers



Collector Ring



Tower Box



Linkage Rod



Spring



Cam & Arm



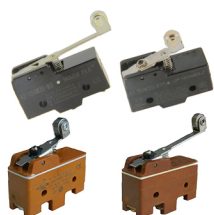
Features:

- Heavy-duty
- Maximum conductivity
- Continuous power to center pivot
- Bronze, oil-fertilized, large bearings
- Plastic & Aluminum housing prevents moisture
- Lubricating inlet
- Copper alloy rings and graphite brushes
- 11-conductor

Features:

- Heavy-duty frame and cover
- Heavy-duty electric components
- Zinc-plated cam shaft
- Weather and chemical-resistant bearing
- Heavy-duty, impact and sunlight-resistant control box
- Plated latches
- Different types

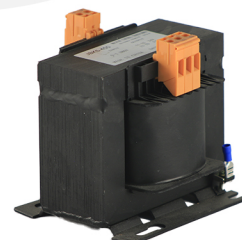
Microswitches



Contactors



Transformer



Switches



Sprinklers and Regulators

Wobbler & Sprayhead Types

- Sprinklers
- Nozzles
- Weights
- Regulators



AGRILAND DROP COMPONENTS

Hose and Fittings

Male Hose
Barb Adapter

Female Hose
Barb Adapter



Agriland Irrigation Pipe PVC
Size: 20x2.5mm - 6 Bar - 77 Meter / Roll



Loops

PVC Elbow
3 / 4" Male NPT x Male NPT Outlet
3 / 4" Male NPT x Barb Outlet

Galvanized Elbow
3 / 4 Male x 3 / 4 Barb



Stainless Steel Clamps

Ear Clamps



American Clamps



Drain Valve



Stainless Steel Clamps

T-Bolt Clamp

6" 5 / 8 Clamp

4" Clamp



Rubber Boot Hose

- 4-Ply Rubber
- Working Pressure: 10
- Size: 6 5 / 8"
- O D: 182mm
- I D: 168mm
- Length: 40 CM



Gaskets

6" Gasket

8" Gasket Round Back



Rims and Tyres

Tyres

Type: 14.9 x 24

Ply-Rating: 8PR

Tubless Tyre Weight: 56.5KG

Pair (High & Wide) : 21 Pair



Rims

Size: 12 x 24

Weight: 33KG

Install for Valley and Lindsay Types

Size: 8 x 24

Weight: 22KG, for Lindsay Type

Hot deep galvanized



ACHIEVEMENTS



LSZ Commins Gear Motor
Manufacturing in China



Agriland Egypt Tyres
Manufacturing in China



Agriland Egypt Gearboxes
Manufacturing in China



Agriland Egypt Control Panel
Control Panel in site



LSZ Commins Gearbox
Gearbox and Tyre in site



LSZ Commins Gearmotor
Agriland Egypt Logo on Gearmotor



Agriland Egypt Booth
Sahara 2016



Agriland Egypt Booth
Sahara 2017



Agriland Egypt Booth
Sahara 2018



Agriland Egypt Booth
Sahara 2019



Agriland Egypt Booth
Sahara 2021



Irrigation Department

Agriland Egypt is a leading company in agriculture, irrigation fields and agricultural consultancy. We offer supply and maintenance for modern irrigation systems, farms design and technical support. As we are an authorized agent for major international companies of center pivot spare-parts.

Landscape Department

Agriland Egypt is a leading company of landscaping services and modern irrigation solutions for Resorts, Hotels, Villas and Gardens.

Wheat Mills Department

Agriland Egypt is a leading company of supply wheat mills spare parts and its maintenance. We are an authorized agent for international companies which manufactures the products according to international standards.

Machinery Department

Agriland is a leading company of supply agricultural machinery including tractors, harvesting machines and other farming equipment.

We are an authorized agent for international companies which manufactures the products according to international standards.

Phone Numbers

+20228412515

+201001500940

+201223989225

Email Address

info@agrilandegypt.com

Head Office

6250 Alquds Street, Street 9, Mokattam
Cairo, Egypt

Website

www.agrilandegypt.com

www.facebook.com/agrilandegypt

